

HQ

Commercial

FOR SUBLEASE

OFFICE SPACE

202-788 COPPING STREET
NORTH VANCOUVER

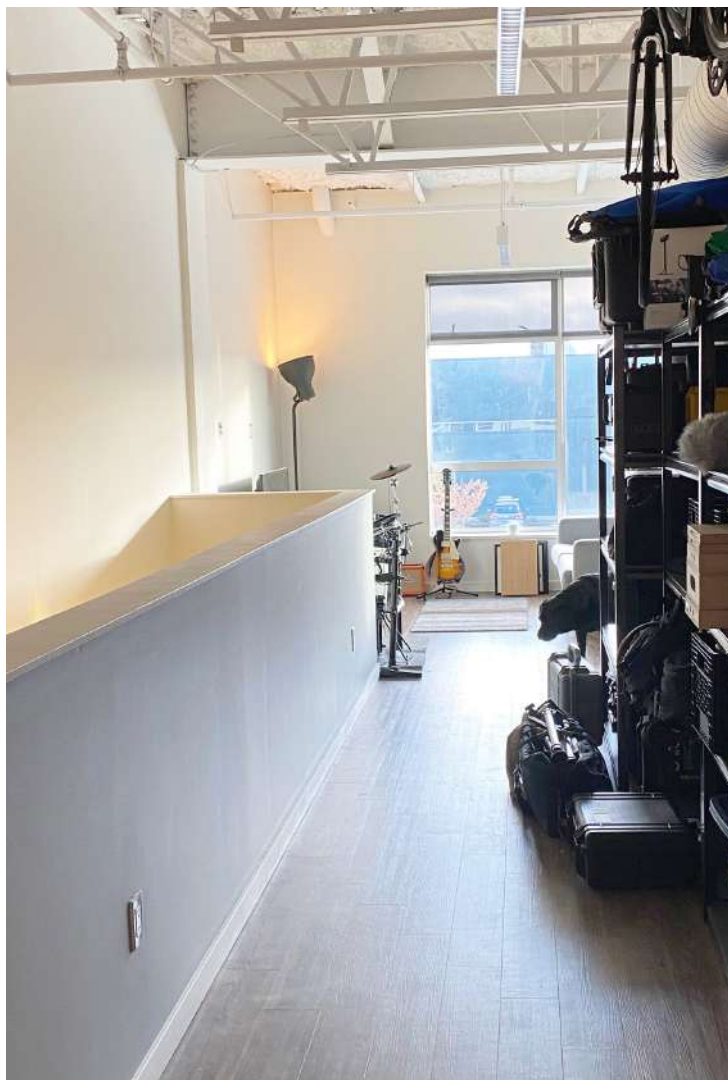


OPPORTUNITY

To lease a modern office space with floor to ceiling southern facing windows, open plan layout in the Harbourside Region of North Vancouver.

LOCATION

The site is adjacent to the Spirit Trail which runs along the waterfront connecting to Lonsdale Quay to the East and Harbourside Business Park to the West.



SUMMARY

BUILDING	202-788 COPPING STREET
CITY	NORTH VANCOUVER
AREA	HARBOURSIDE LANDING
PID	028-593-693
ZONING	CD-594

SITE SIZE	842 SF
PARKING	2 STALL
AVAILABLE	IMMEDIATELY
LEASE TERM	TILL FEBRUARY 27, 2022 *
LEASE RATE	\$1,800 PER MONTH

*LANDLORD WILLING TO EXTEND LEASE TO A LONGER TERM.

 Commercial	Scott Smith 604 788 4600 scott.smith@hqcommercial.ca	HQ Commercial 1330 Granville Street Vancouver BC V6Z 1M7	604 899 1122 604 608 4819 hqcommercial.ca
---	---	---	--

* Personal Real Estate Corporation
 This document/email has been prepared by HQ Commercial for advertising and general information only. HQ Commercial makes no guarantees, representations or warranties of any kind, expressed or implied, regarding the information including, but not limited to, warranties of content, accuracy and reliability. Any interested party should undertake their own inquiries as to the accuracy of the information. HQ Commercial excludes unequivocally all inferred or implied terms, conditions and warranties arising out of this document and excludes all liability for loss and damages arising there from. This publication is the copyrighted property of HQ Commercial and/or its licensor(s). © 2020. All rights reserved. This communication is not intended to cause or induce breach of an existing listing agreement.