

OPPORTUNITY

To acquire a well improved warehouse property in the downtown Eastside. The subject building has a ceiling height clearance of 18.75 feet and a total property size of 5,250 SF. The building was built in 1980 but the office and warehouse are newly renovated.



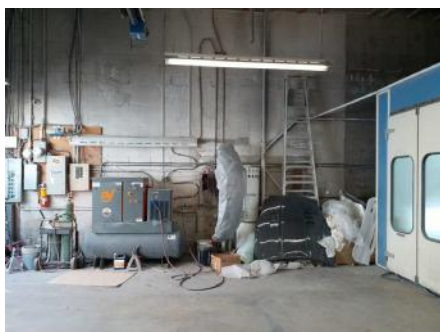
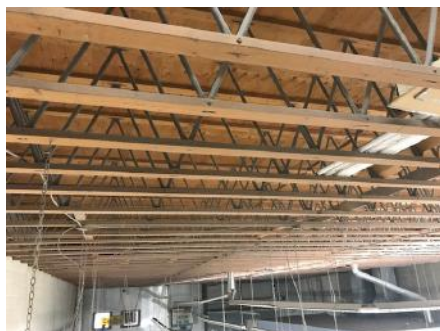
Commercial

320-1385 West 8th Ave.
Vancouver, BC V6H 3V9

t 604 899 1122
f 604 608 4819
hqcommercial.ca

Sam Emam*
*Personal Real Estate Corporation

604 420 4205
sam@hqcommercial.ca



PROPERTY SUMMARY

Building Size	Office	1,278 SF
	Warehouse	5000 SF (newly renovated)
	Total	6,278 SF
Lot Size	Approx. 43' x 122.1'	
	(5,250.30 SF/0.12 acres)	
Zoning	12- light Industrial	
PID	015-711-382	
Legal Description	PL VAP176 LT A BLK A DL 182 LD 36. (REF PL 1329) OF LOT 12 LOT 13.	
Property Tax (2016)	\$23,085.18	
Price	\$3,595,000	



Sam Emam*

*Personal Real Estate Corporation

604 420 4205

sam@hqcommercial.ca

320-1385 West 8th Ave.
Vancouver, BC V6H 3V9

t 604 899 1122
f 604 608 4819
hqcommercial.ca