

HQ

Commercial

FOR LEASE

CORNER WESTSIDE RETAIL
101-1401 WEST 8TH AVENUE, VANCOUVER

OPPORTUNITY

To lease a large retail space on the Westside at below retail market rates



LOCATION

Situated on the northwest corner of West 8th Avenue and Hemlock Street, which is a major thoroughfare to downtown, the premises boasts exposure to over 24,150 vehicles 2 way traffic daily and numerous offices along the Broadway Corridor. Just one block east of Granville street, the premises offers a convenient location without the pricey rates.

NHI DENIS*

604 351 8089

nhi@icicvancouver.com

*Personal Real Estate Corporation



320-1385 W 8th Ave
Vancouver BC V6H 3V9

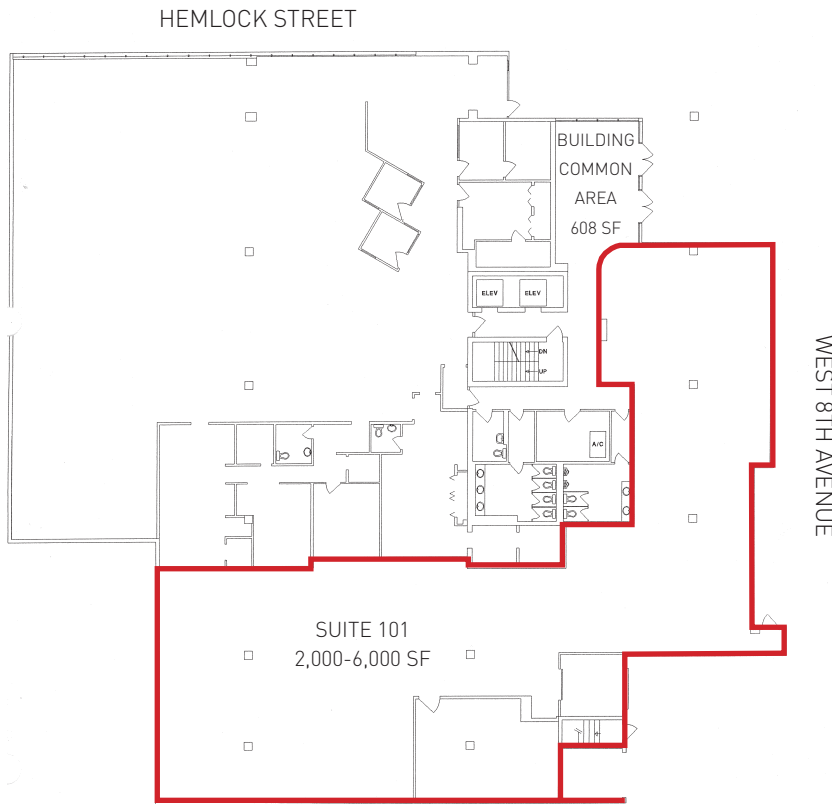
o 604 899 1122
f 604 608 4819
hqcommercial.ca

HQ

Commercial

FOR LEASE

101-1401 WEST 8TH AVENUE, VANCOUVER



SIZE

2,000 - 6,000 SF

BASIC RENT

\$18-28 PSF, triple net

ADDITIONAL RENT

\$18 PSF (est. 2017)

LOADING

Exclusive grade loading bay to premises

PARKING

Ample Street parking and underground stalls at prevailing market rates

NHI DENIS*

604 351 8089

nhi@icicvancouver.com

*Personal Real Estate Corporation



320-1385 W 8th Ave
Vancouver BC V6H 3V9

o 604 899 1122
f 604 608 4819
hqcommercial.ca

This document/email has been prepared by HQ Commercial for advertising and general information only. HQ Commercial makes no guarantees, representations or warranties of any kind, expressed or implied, regarding the information including, but not limited to, warranties of content, accuracy and reliability. Any interested party should undertake their own inquiries as to the accuracy of the information. HQ Commercial excludes unequivocally all inferred or implied terms, conditions and warranties arising out of this document and excludes all liability for loss and damages arising there from. This publication is the copyrighted property of HQ Commercial and /or its licensors(s). © 2017. All rights reserved. This communication is not intended to cause or induce breach of an existing listing agreement.